

# ELECTRICAL EQUIPMENT

## DO YOU KNOW

## ACTION RECOMMENDED

**1** Is specified electrical equipment inspected, tested and tagged or connected to a safety switch?

NO

Do you know what is meant by 'inspecting, testing and tagging' of specified electrical equipment? Do you know what a safety switch is? If not, see **Appendix E**

Ensure safety switches installed and tested, and/ or specified electrical equipment inspected, tested and tagged.

YES

**2** Is the safety switch tested, and is the test recorded and kept?

NO

Do you know what is meant by inspecting and testing a safety switch? If not, see **Appendix E**

Ensure the safety switch is tested and the test recorded and kept

YES

**3** Does the workplace have documented procedures for electrical safety?

NO

Develop and document procedures for electrical safety

YES

**4** Are the procedures enforced for all employees and others possibly exposed to electrical hazards?

NO

Ensure procedures are enforced for all employees and others possibly exposed to electrical

YES

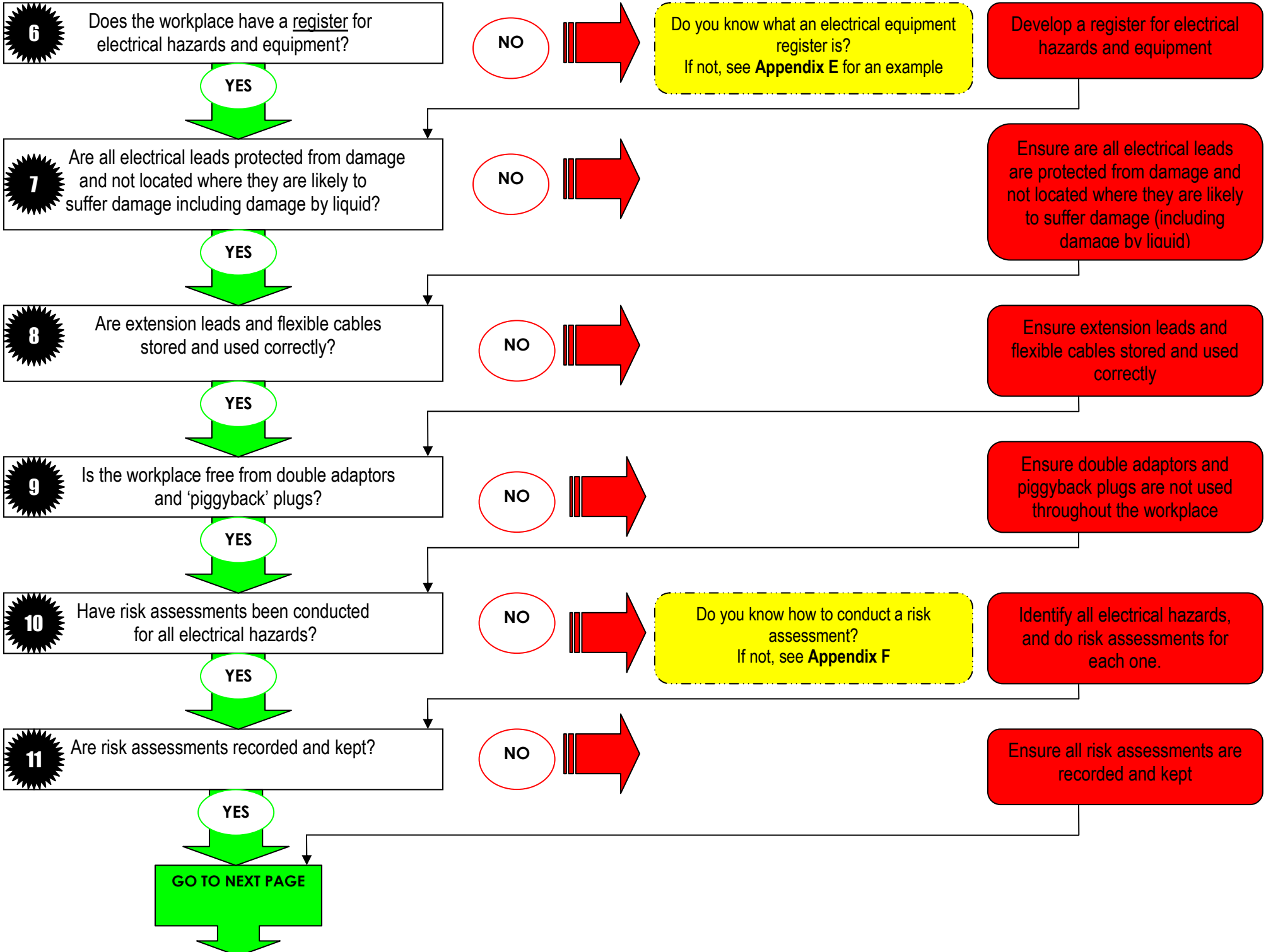
**5** Are policies and procedures included in the induction process?

NO

Ensure policies and procedures are included in the induction process.

YES

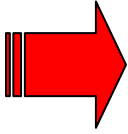
GO TO NEXT PAGE



**12** Are all risks associated with electrical hazards controlled?

YES

NO

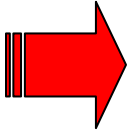


Ensure all risks associated with electrical hazards are controlled

**13** Have all control measures been recorded and kept?

YES

NO



Ensure all control measures are recorded and kept

GO TO NEXT MODULE